

Fusing Equipment

240-83

ELSG Fuse Holder

GENERAL

Cooper Power Systems' ELSG fuse holder is a non-loadbreak device used to mount ELSG (Section 240-82) current-limiting fuses in oil-filled distribution apparatus. The handle assembly and the upper contact cap guide finders provide the ease of hotstick operation for fuse removal for inspection and/or replacement.

INSTALLATION

An outer flange is welded to the apparatus sidewall. Internally a fuse holder is bolted to the flange. The fuse is mounted on the end of a handle assembly and inserted into the fuse holder. A bail assembly with gasket insures a tight seal from the environment.

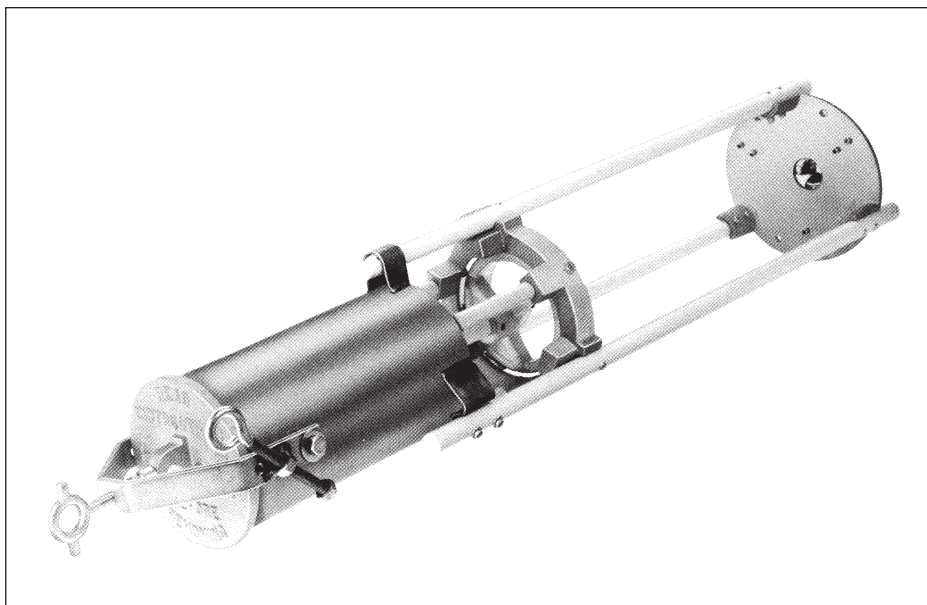


Figure 1.
ELSG Fuse Holder.

TABLE 1
Electrical Ratings and Characteristics

Voltage Rating (KV)	BIL Rating (kV)	Minimum Clearances (From centerline of fuse)	
		Phase-to-Phase	Phase-to-Ground
15	125	10.0" (254 mm)	6.0" (152.4 mm)
25	150	10.0" (254 mm)	10.0" (254 mm)
35	150	10.0" (254 mm)	10.0" (254 mm)

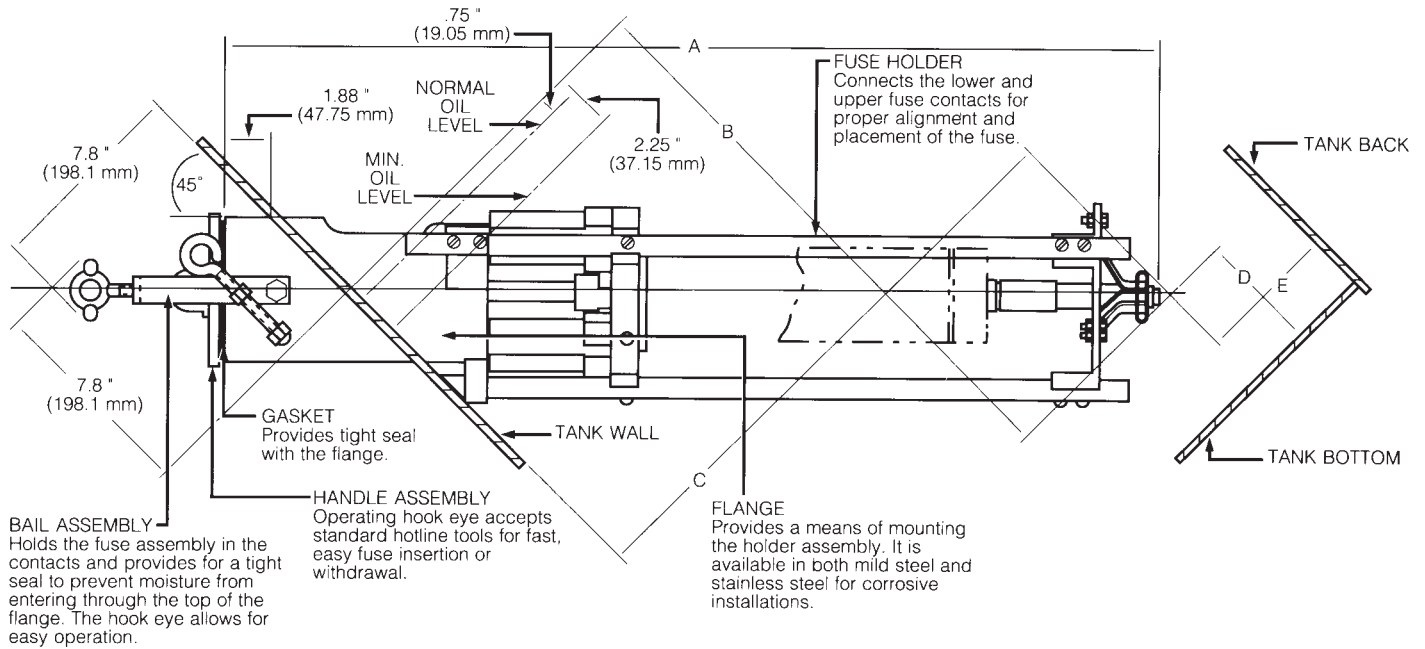


Figure 2.
Dimensional information for ELSG Fuse Holder.

NOTE: Dimensions given are for reference only.

ORDERING INFORMATION

To order a Cooper Power Systems' ELSG Fuse Holder, refer to Table 2.

TABLE 2
Assemblies

Description	Catalog Number
15 kV	
Mild Steel Assembly	3437322C01M
Stainless Steel Assembly	3437322C02M
25 kV and 35 kV	
Mild Steel Assembly	3437322C05M
Stainless Steel Assembly	3437322C07M
35 kV	
Mild Steel Assembly (for ELSG Fuses: 3595050M01M, 3595080M01M, 3595100M01M and 3595125M01M)	3437322C06M

TABLE 3
ELSG Fuse Holder Dimensional Information

System Phase-to-Phase Nominal	A	B	C	D	E
15 kV	34.34 (872.24)	21.28 (540.51)	21.06 (534.93)	6.00 (152.40)	11.00 (279.40)
25 kV and 35 kV	36.40 (924.56)	22.74 (577.60)	22.52 (572.01)	9.50 (241.30)	12.50 (317.50)
35 kV (Note 1)	42.70 (1084.58)	27.57 (700.28)	27.30 (693.42)	9.43 (239.52)	7.70 (195.58)

1. Holder for the following: ELSG fuses only: 3595050M01M, 3595080M11M, 3595100M01M and 3595125M01M

TABLE 4
Replacement Parts

Description	Catalog Number
Bail Assembly	1637318C01
Handle Assembly	3437321C02
Mild Steel Flange	3438241B01
Stainless Steel Flange	3438241B02
15 kV Fuse holder for 15 kV	3437644C01
25 kV and 35 kV Fuse holder	3437644C02
35 kV Fuse Holder (for ELSG Fuses: 3595050M01M, 3595080M01M and 3595125M01M)	3437644C03



1045 Hickory Street
 Waukesha, WI 53072
 www.cooperpower.com