

Fusing Equipment

Electrical Apparatus

240-53

ELSP Fuse Holder

GENERAL

The Cooper Power Systems ELSP fuse holder is used to support the ELSP oil immersible current-limiting fuse.

The support assembly consists of a polyglass board and four nylon spacers attached with nylon nuts. The fuse is fastened to the board by means of two stainless steel tie-downs and two nylon ty-raps. Experience has shown that this combination of fuse ties provides the best insurance that the fuse will remain stationary and secure during shipment of the apparatus.

The ELSP fuse and holder are easily mounted inside the transformer. The fuse holder may be mounted anywhere there is space and in any position. Good design practice dictates that the fuse be located as near as practical to the incoming primary bushing.

INSTALLATION

The fuse is mounted on the board using springs and ties. The nylon spacers are then mounted on welded-in studs or with bolts on a bracket or crossbar. The board assembly with fuse is positioned over the four spacers and tightened with the nylon nuts. The leads are connected to each end of the fuse using a ¼ inch crimped terminal lug. Refer to Installation Instruction Sheet S240-50-1 for details.

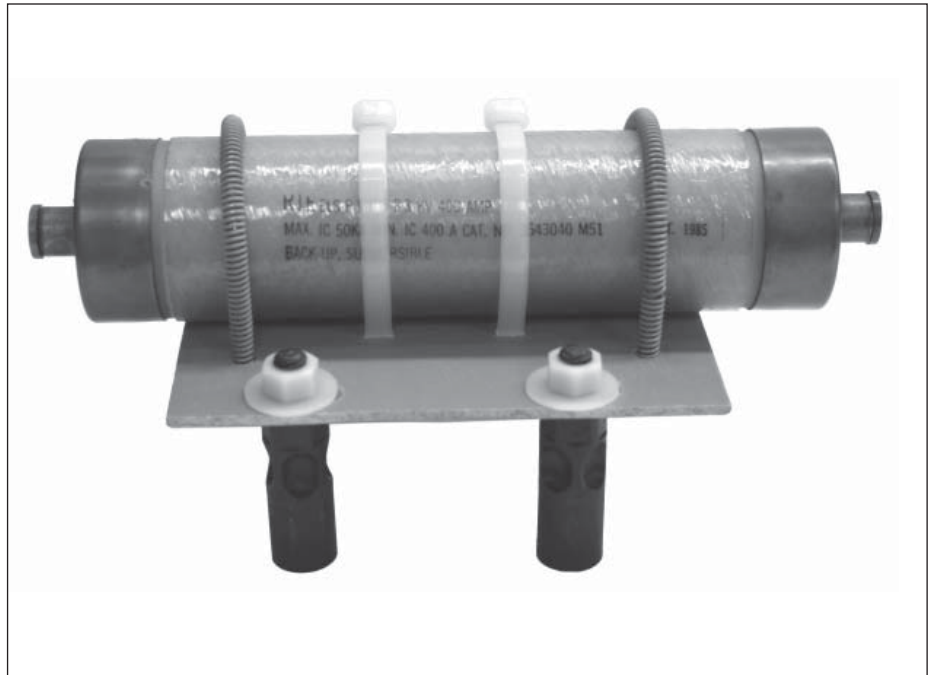


Figure 1.
ELSP fuse mounted onto ELSP Fuse Holder.

Features and Detailed Description

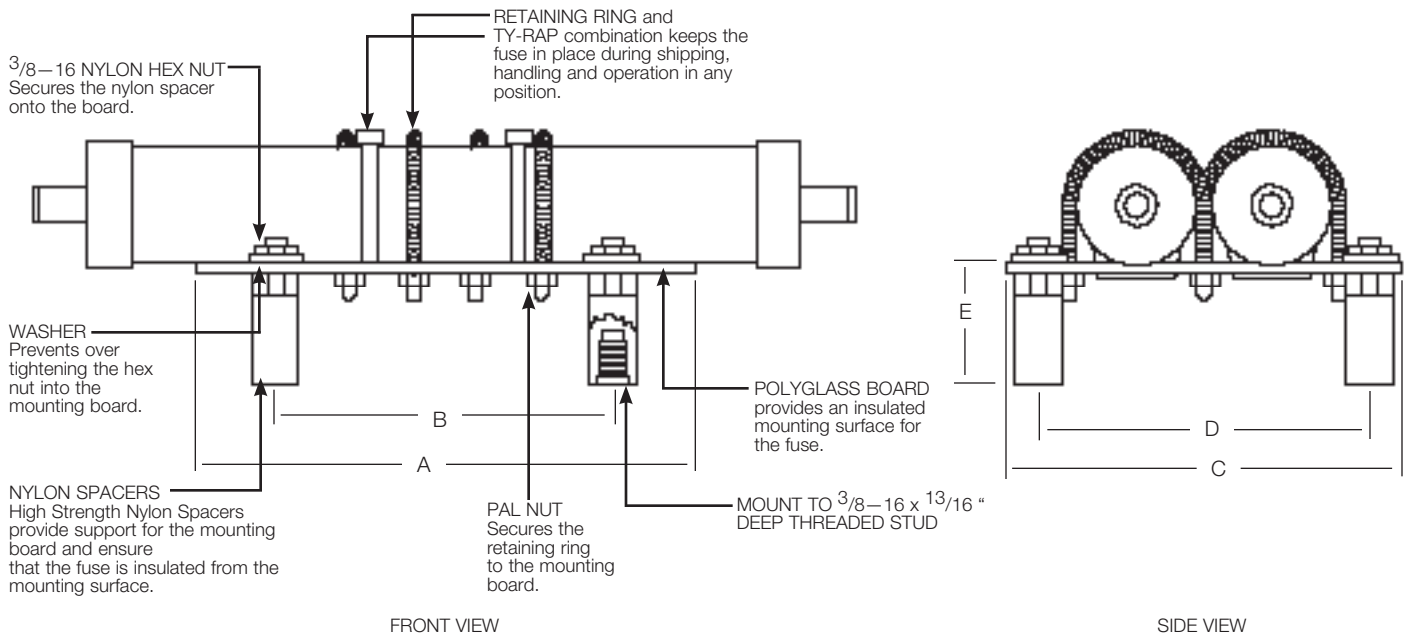


Figure 2.
Front view of fuse holder showing dimension. Side view showing a two-fuse assembly.

NOTE: Dimensions given are for reference only.

TABLE 1
ELSP Fuse Holder Dimensional Information

Holder Type	Dimensions				
	A	B	C	D	E
2" dia Single	6.0 (152)	3.00 (76)	5.0 (127)	4.13 (105)	2.1 (53)
2" dia. Parallel and 3" dia. Single	9.0 (229)	5.98 (152)	7.0 (178)	5.92 (150)	2.1 (53)

ORDERING INFORMATION

To order our ELSP fuse holder, specify the fuse holder required from Table 2.

TABLE 2
ELSP Fuse Holder

Description	Catalog Number
Single Fuse Holder (2" dia. fuse)	3409661C05M
Parallel Fuse Holder (2" dia. fuse)	3409661C07M
Single Fuse Holder (3" dia. fuse)	3409661C08M

COOPER Power Systems

1045 Hickory Street
 Pewaukee, WI 53072
 www.cooperpower.com