

ELST Fuse Holder

GENERAL

The RTE® ELST fuse holder is a non-loadbreak device used to mount RTE ELST (Section 240-75) current limiting fuses in oil-filled distribution apparatus. The handle assembly and the upper contact cap guide finders provide the ease of hotstick operation for fuse removal for inspection and/or replacement.

INSTALLATION

An outer flange is welded to the apparatus sidewall. Internally a fuse holder is bolted to the flange. The fuse is mounted on the end of a handle assembly and inserted into the fuse holder. A bail assembly with gasket insures a tight seal from the environment.



Figure 1.
ELST Fuse Holder.

TABLE 1
Electrical Ratings and Characteristics

Voltage Rating (kV)	BIL Rating (kV)	Minimum Clearances (From centerline of fuse)	
		Phase-to-Phase	Phase-to-Ground
15	125	10.0" (254 mm)	6.0" (152.4 mm)
25	150	10.0" (254 mm)	10.0" (254 mm)
35	150	10.0" (254 mm)	10.0" (254 mm)

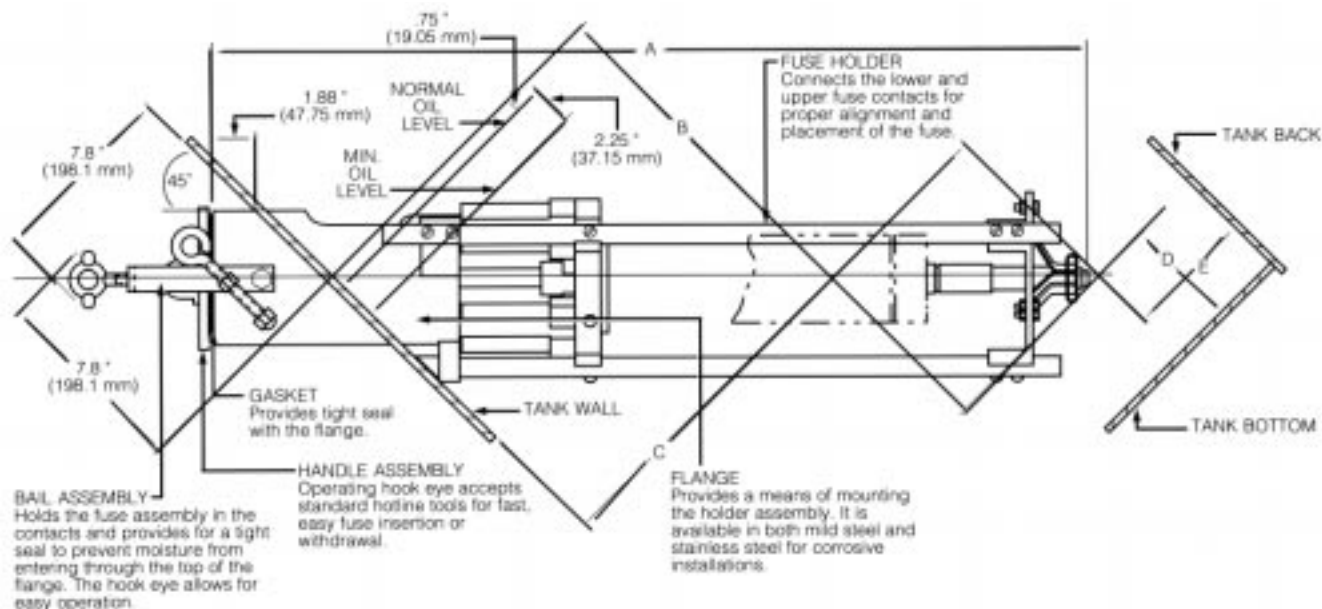


Figure 2.
Dimensional information for ELST Fuse Holder.

NOTE: Dimensions given are for reference only

ORDERING INFORMATION

To order an RTE ELST Fuse Holder, refer to Table 2.

TABLE 2
Assemblies

Description	Catalog Number
15 kV	
Mild Steel Assembly	3437322C01M
Stainless Steel Assembly	3437322C02M
25 kV	
Mild Steel Assembly (including adapter with handle assembly)	3437322C03M
35 kV	
Mild Steel Assmblly	3437322C05M
Stainless Steel Assembly	3437322C07M

TABLE 3
ELST Fuse Holder Dimensional Information

System Phase-Nominal	A	B	C	D	E
15 kV	34.34 (872.24)	21.28 (540.51)	21.06 (534.93)	6.00 (152.40)	11.00 (279.40)
25 kV	36.40 (924.56)	22.74 (577.60)	22.52 (572.01)	9.50 (241.30)	12.50 (317.50)
35 kV	36.40 (924.56)	22.74 (577.60)	22.52 (572.01)	9.50 (241.30)	12.50 (317.50)

NOTE: Spacing required for expulsion fuse and other energized components for electrical clearance. Any insulated surface must not trap gas generated by expulsion fuse operation.

TABLE 4
Replacement Parts

Description	Catalog Number
Adapter for 25 kV	
Handle Assembly	3438230A01
Bail Assembly	1637318C01
Handle Assembly	3437321C02
Mild Steel Flange	3438241B01
Stainless Steel Flange	3438241B02
15 kV Fuse holder for 15 kV	3437644C01
25 kV and 35 kV Fuse holder	3437644C02

